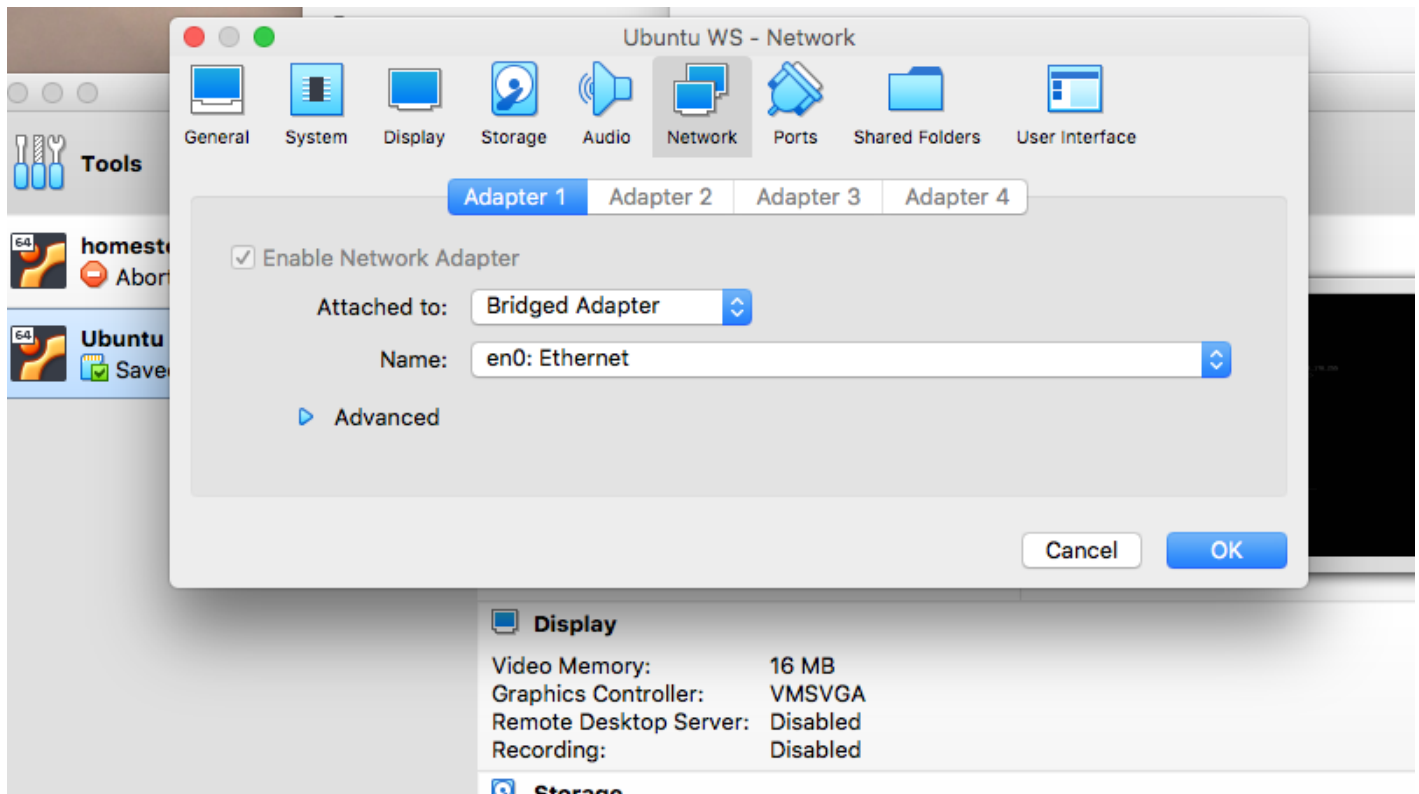


Mac/VirtualBox

Screenendumps



Tools

homestead

Aborted

Ubuntu WS

Powered Off

General

Name: Ubuntu WS

Operating System: Ubuntu (64-bit)

Settings File Location: /Users/max/VirtualBox VMs/Ubuntu WS

System

Base Memory: 1024 MB

Boot Order: Floppy, Optical, Hard Disk

Acceleration: VT-x/AMD-V, Nested Paging, KVM Paravirtualization

Display

Video Memory: 16 MB

Graphics Controller: VMSVGA

Remote Desktop Server: Disabled

Recording: Disabled

Storage

Controller: IDE

IDE Secondary Master: [Optical Drive] Empty

Controller: SATA

SATA Port 0: Ubuntu WS.vdi (Normal, 10,00 GB)

Audio

Host Driver: CoreAudio

Controller: ICH AC97

Network

Adapter 1: Intel PRO/1000 MT Desktop (Bridged Adapter, en1: Wi-Fi (AirPort))

USB

USB Controller: OHCI

Device Filters: 0 (0 active)

Shared folders

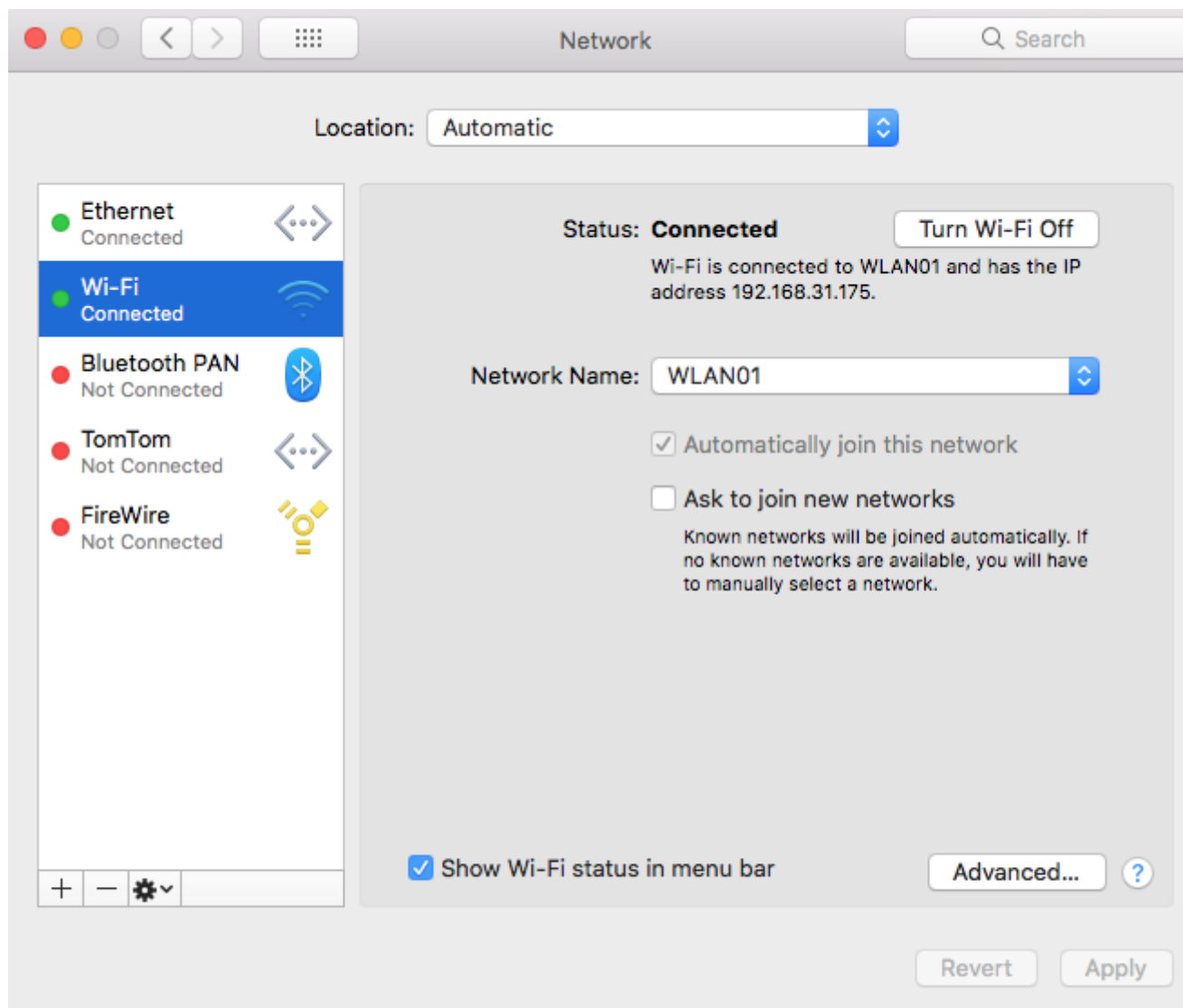
None

Description

None

Preview

Ubuntu WS



* Support: <https://ubuntu.com/advantage>

The Virtual Machine reports that the guest OS supports **mouse pointer integration**. This means that you do not need to *capture* the System information disabled due to load higher than 1.0



* Multipass 1.0 is out! Get Ubuntu VMs on demand on your Linux, Windows or Mac. Supports cloud-init for fast, local, cloud devops simulation.

<https://multipass.run/>

54 packages can be updated.
0 updates are security updates.

nfig

max@ubuntu_ws:~\$

max@ubuntu_ws:~\$

max@ubuntu_ws:~\$

max@ubuntu_ws:~\$ ifconfig

```
enp0s3: flags=4163<UP,BROADCAST,RUNNING,MULTICAST>  mtu 1500
    inet 192.168.31.224  netmask 255.255.255.0  broadcast 192.168.31.255
    inet6 fe80::a00:27ff:fe1b:273  prefixlen 64  scopeid 0x20<link>
    ether 08:00:27:1b:02:73  txqueuelen 1000  (Ethernet)
    RX packets 51  bytes 20686 (20.6 KB)
    RX errors 0  dropped 0  overruns 0  frame 0
    TX packets 38  bytes 9778 (9.7 KB)
    TX errors 0  dropped 0 overruns 0  carrier 0  collisions 0
```

```
lo: flags=73<UP,LOOPBACK,RUNNING>  mtu 65536
    inet 127.0.0.1  netmask 255.0.0.0
    inet6 ::1  prefixlen 128  scopeid 0x10<host>
    loop txqueuelen 1000  (Local Loopback)
    RX packets 88  bytes 6632 (6.6 KB)
    RX errors 0  dropped 0  overruns 0  frame 0
    TX packets 88  bytes 6632 (6.6 KB)
    TX errors 0  dropped 0 overruns 0  carrier 0  collisions 0
```

max@ubuntu_ws:~\$ _

```
max — max@ubuntu_ws: ~ — ssh max@192.168.31.224 — 100x40
Last login: Thu Feb 13 20:38:39 on console
[max@iMac:~]$ ssh max@192.168.31.224
The authenticity of host '192.168.31.224 (192.168.31.224)' can't be established.
ECDSA key fingerprint is SHA256:2kH0NkkWoL99P0uWiSKAneLelZpI6vFMdUmvxUiHqD4.
Are you sure you want to continue connecting (yes/no)? yes
Warning: Permanently added '192.168.31.224' (ECDSA) to the list of known hosts.
max@192.168.31.224's password:
Welcome to Ubuntu 18.04.3 LTS (GNU/Linux 4.15.0-76-generic x86_64)

 * Documentation:  https://help.ubuntu.com
 * Management:    https://landscape.canonical.com
 * Support:       https://ubuntu.com/advantage

System information disabled due to load higher than 1.0

 * Multipass 1.0 is out! Get Ubuntu VMs on demand on your Linux, Windows or
   Mac. Supports cloud-init for fast, local, cloud devops simulation.

   https://multipass.run/

54 packages can be updated.
0 updates are security updates.

Last login: Thu Feb 13 19:43:20 2020
max@ubuntu_ws:~$
```

Revision #1

Created 13 February 2020 19:46:42 by Max

Updated 13 March 2020 16:42:47 by Max